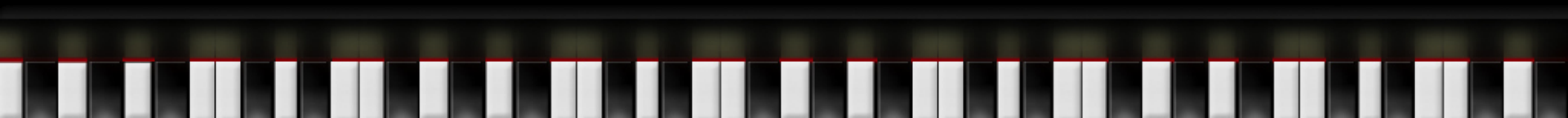


**Welcome to  
Back to Music Night!**

**[www.DLESmusic.com](http://www.DLESmusic.com)**



# Chorus

Chorus classes are  
Wednesdays at 10:00am  
with Mrs. McCoy

Chorus Starts Wednesday Sept 30  
Code: DLESCHORUS

Visit [www.DLESmusic.com](http://www.DLESmusic.com) to sign-up!



# The Instruments!

## Orchestra

Violin

Viola

Cello

Bass

## Band

Flute

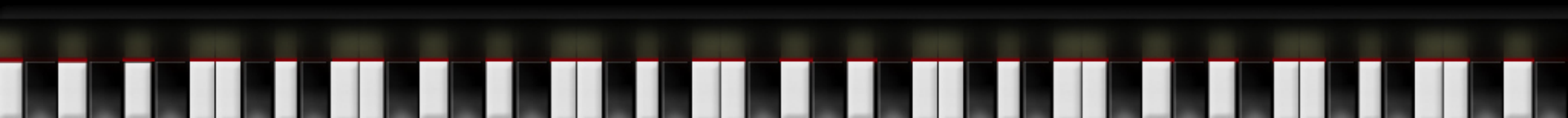
Clarinet

Saxophone

Trumpet

Percussion

[www.DLESmusic.com](http://www.DLESmusic.com)



# Music is like Sports

- Band and Orchestra are like a being on a team
- Every member plays an important role
- Learn important new skills
  - Endurance and Dexterity
  - Develop muscle memory and fine motor skills
- Repetition through practice and drills





# Getting an Instrument

## Option 1 - Rent from a Music Store

- Stores have a rent to own program
- Music stores provide repairs
- Visit [www.DLESmusic.com](http://www.DLESmusic.com) for a list of local music stores

Renting is better than buying.

Please DO NOT buy a cheap instrument online.

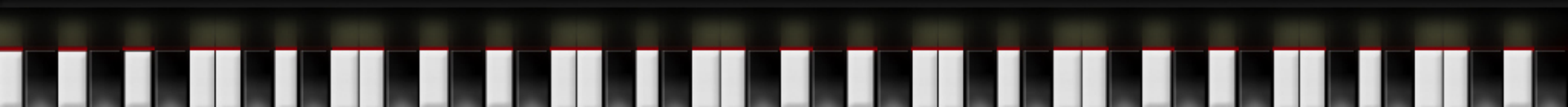


# Getting an Instrument

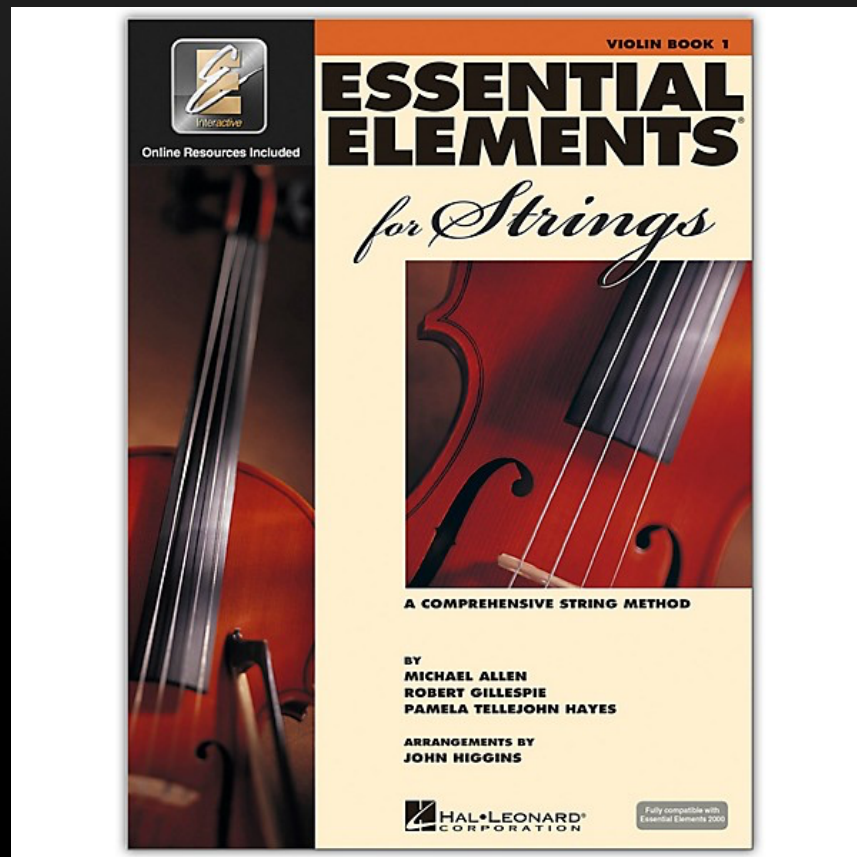
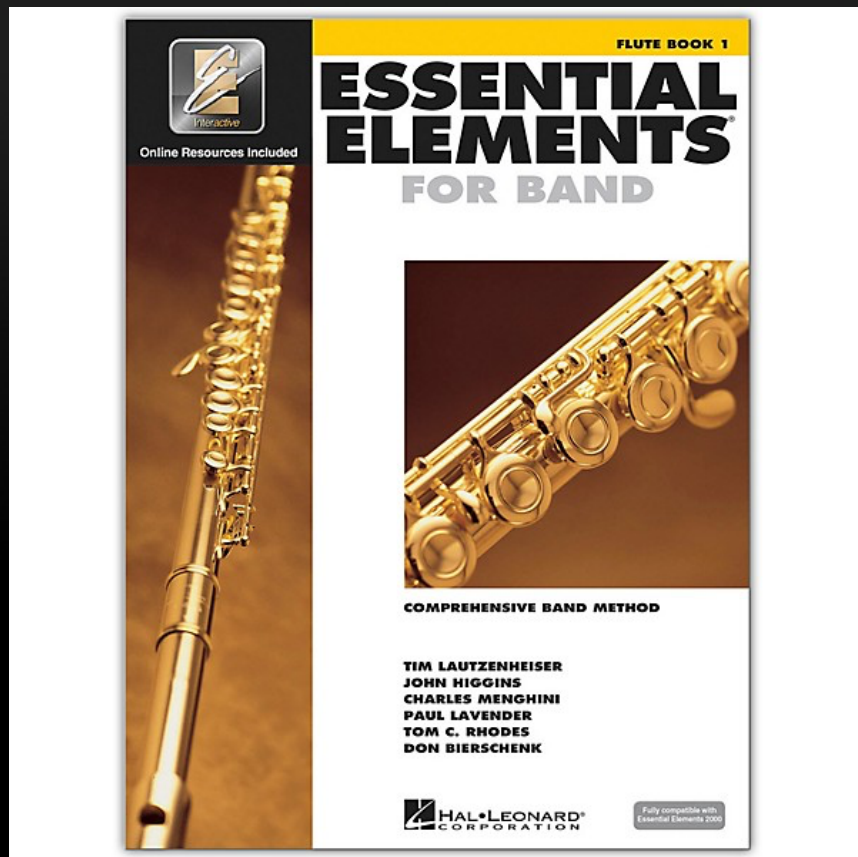
## Option 2 - Borrow from DLES

- Must complete Family File
- Must complete a training sent from Mrs. McKay
- Pick-up instruments from DLES

Please look for emails from Mrs. McKay



# Method Book



# Other Required Materials

- Method Book (for your child's instrument)
- Clarinet & Saxophone must buy at least 4 reeds
- Orchestra students need other accessories that come with the instrument when it is rented or borrowed
- Music Stand (highly recommended)

Please visit [www.DLESmusic.com](http://www.DLESmusic.com) for a complete list and suggestions on where to purchase materials.



# Band & Orchestra Classes

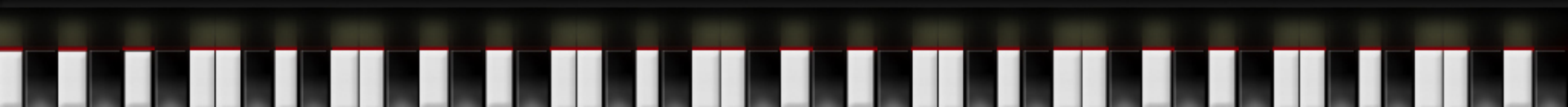
- **2 Synchronous classes each week**
  - The Google Meet Code can be found on the Canvas Calendar and on the Canvas Orchestra or Band Page
- **1 Asynchronous assignment each week**
  - This assignment will be a log of the student's practice time



# Student Responsibilities

## BEFORE CLASS:

- Have Music Learning space set up and ready:
  - instrument out of the case and ready to play
  - music book ready
  - pencil





**Cleaning Cloth**  
**Rosin**  
**Pencil**

**Device**



**Music Stand**

**Rock Stop (Cello)**



**Instrument Case**



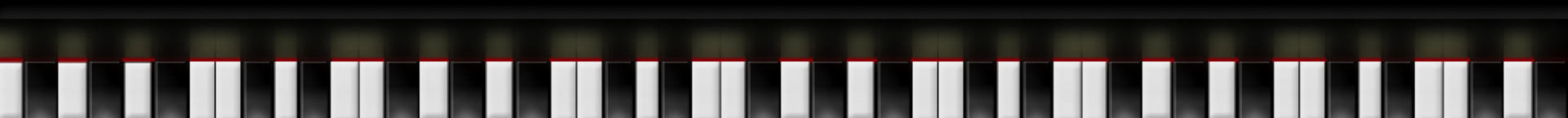
# Student Responsibilities

## DURING CLASS

- Show up to class on time
- Pay attention and try their best

## AFTER CLASS

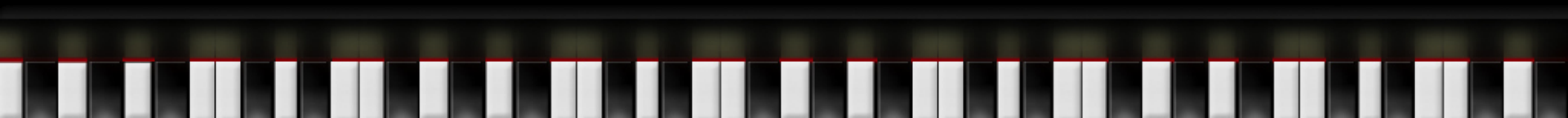
- Practice at home at least 5 days a week





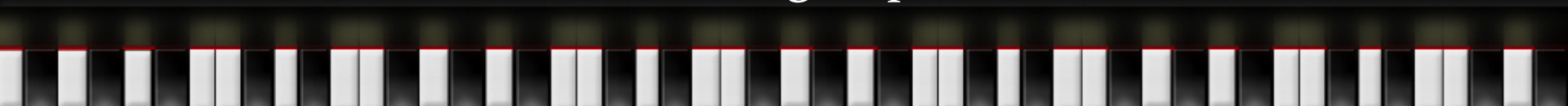
# Helping at Home

- Schoolwork is not done until practicing is done!
- You will need to help out!
- 1<sup>st</sup> half of the year is vital. Practicing = success!
- Be Positive!



# During Practice

- Help keep your child on task and focused on progress.
- Encourage careful repetition. Playing through something only one time is never enough!
- Make sure your child is spending the most time practicing music that he/she has trouble with, not just the songs they like the best.
- Even if you don't know the answers, ask questions to help your child focus on improving.
- Be positive! Please don't even joke about bad sounds.
- There is ALWAYS something to practice!

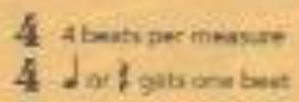


### Treble Clef



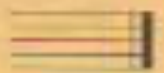
Clefs indicate a set of note names.

### Time Signature (Meter)



The time signature tells us how many beats are in each measure and what kind of note gets one beat.

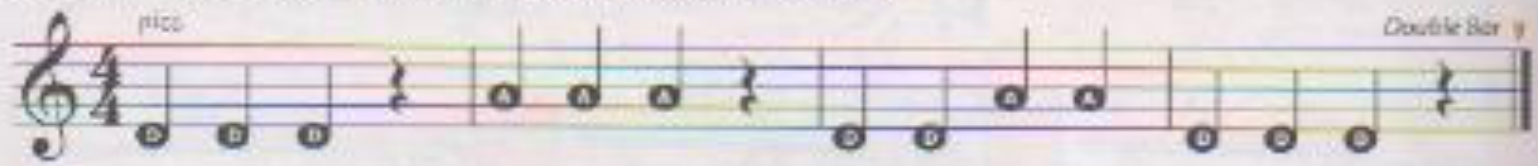
### Double Bar



A double bar indicates the end of a piece of music.

THEORY

### 6. JUMPING JACKS *Identify the clef and time signature before playing.*



### 7. MIX 'EM UP

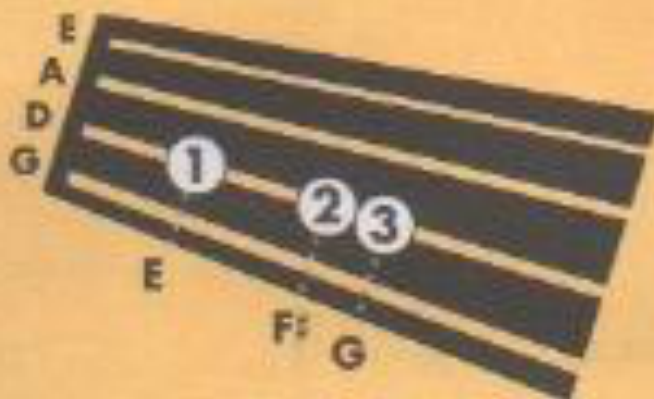


# SHAPING THE LEFT HAND

## D STRING NOTES

**Step 1** Shape your left hand as shown.  
Be certain your palm faces you.

- 0 = Open string
- 1 = 1st finger
- 2 = 2nd finger
- 3 = 3rd finger
- 4 = 4th finger



**Step 2** Bring your hand to the fingerboard. Place your fingers on the D string, keeping your hand shaped as shown below. Be sure your first finger forms a square with the fingerboard, and your wrist is relaxed and straight.

**G** is played with 3 fingers on the D string.



**F#** is played with 2 fingers on the D string.



**E** is played with 1 finger on the D string.

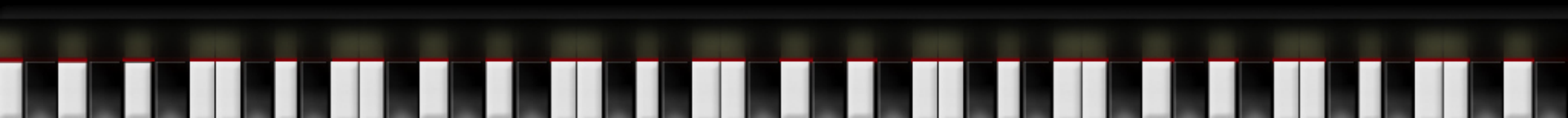


## Listening Skills

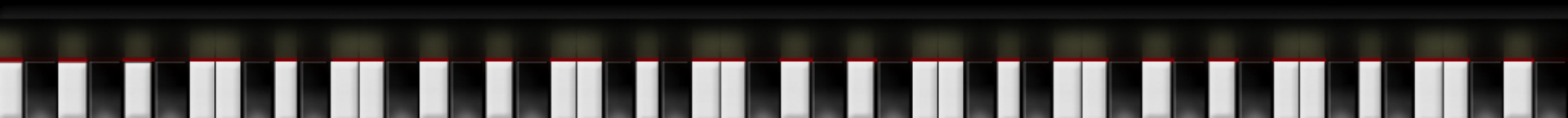
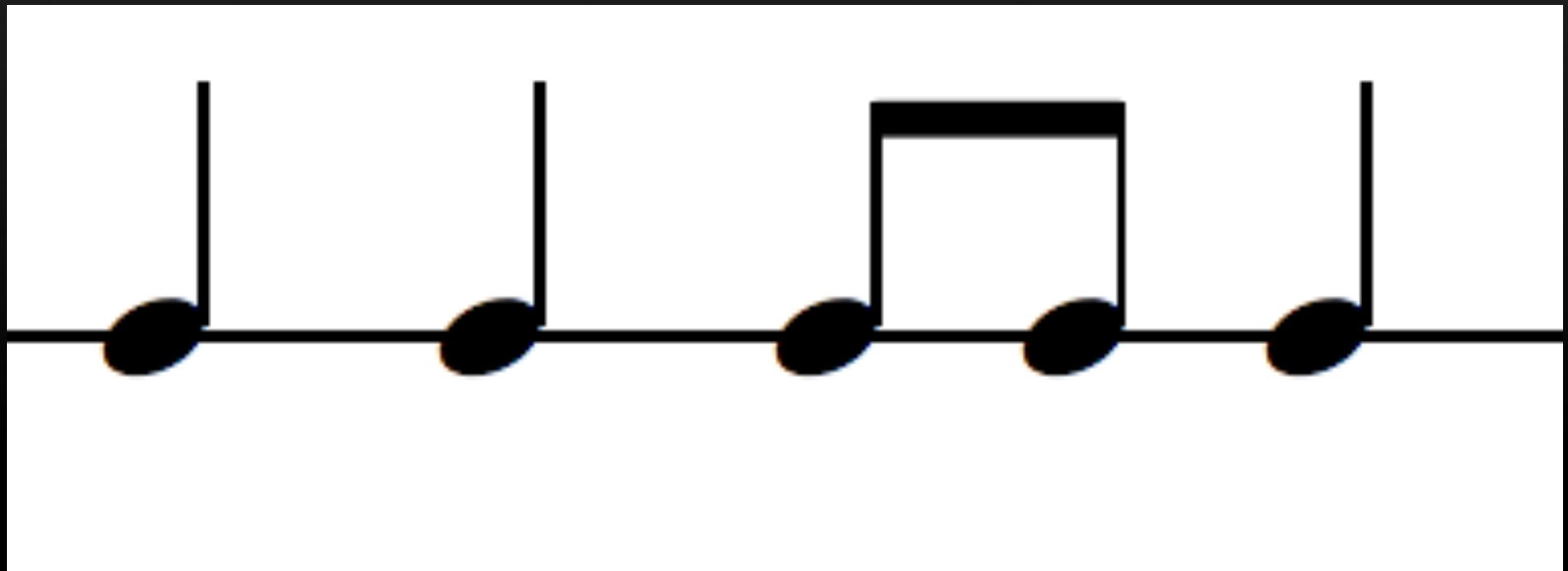
Play what your teacher plays. Listen carefully.

# Encourage Your Student

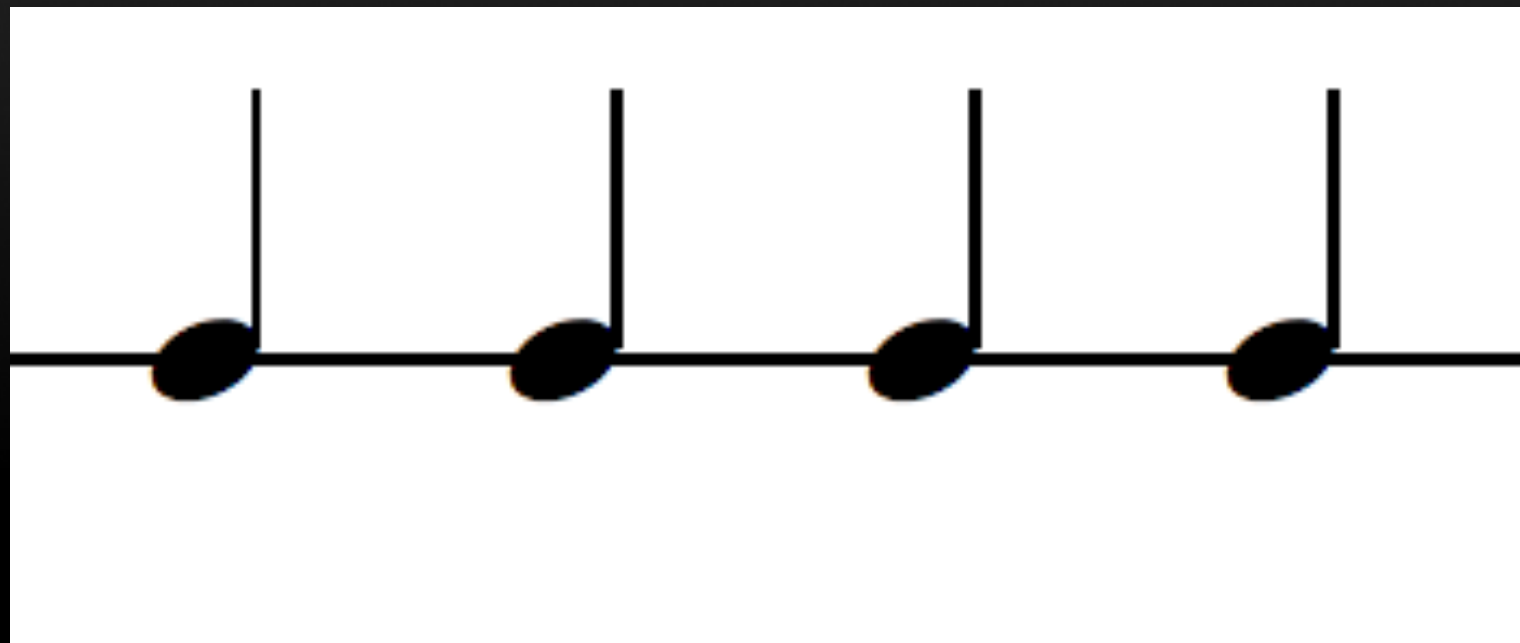
- Listen to music and watch videos of professionals playing the same instrument as your student to develop a concept of a good sound and to become inspired!
- Have your child perform for you and your family on a regular basis.

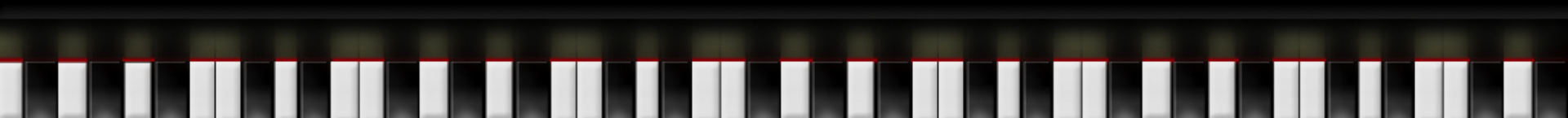
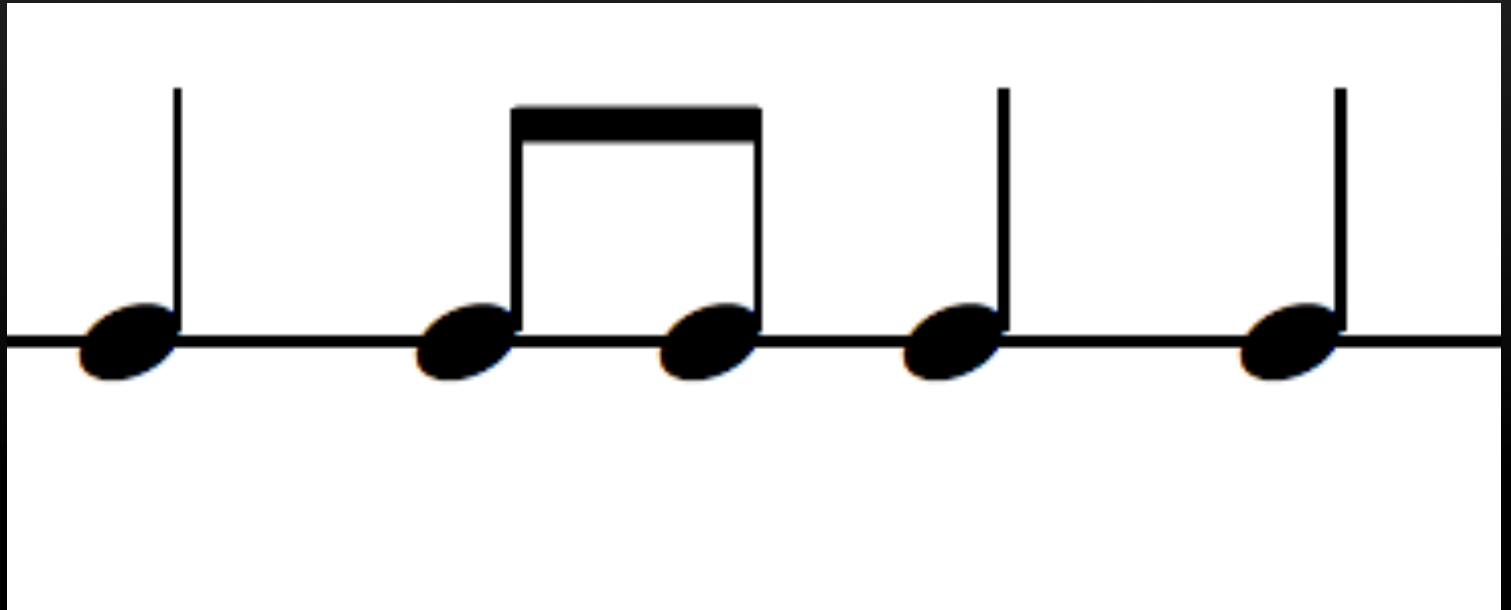


Can you read this?

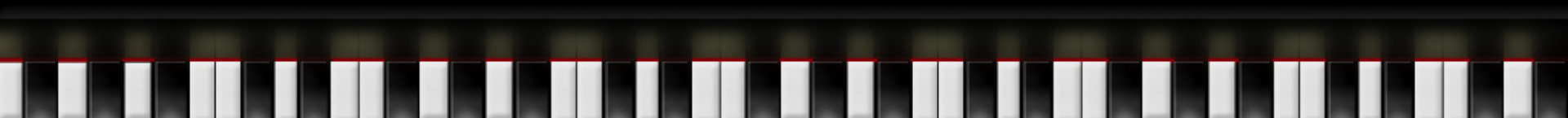
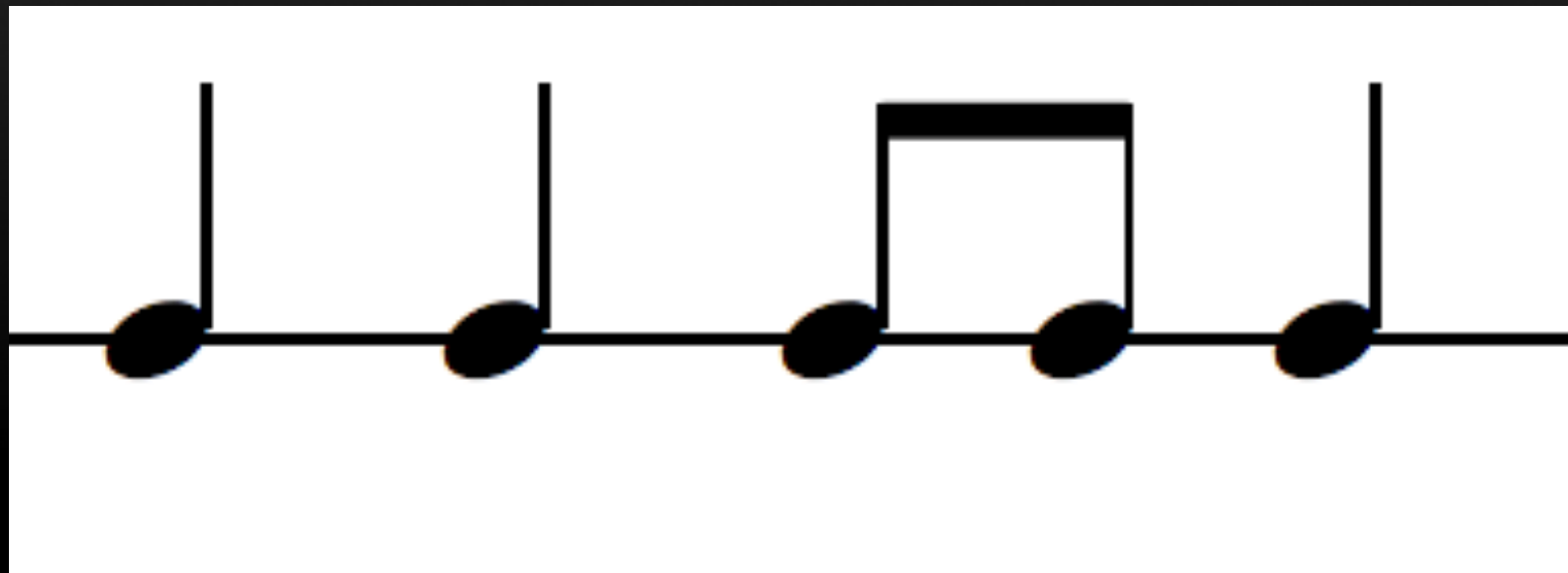


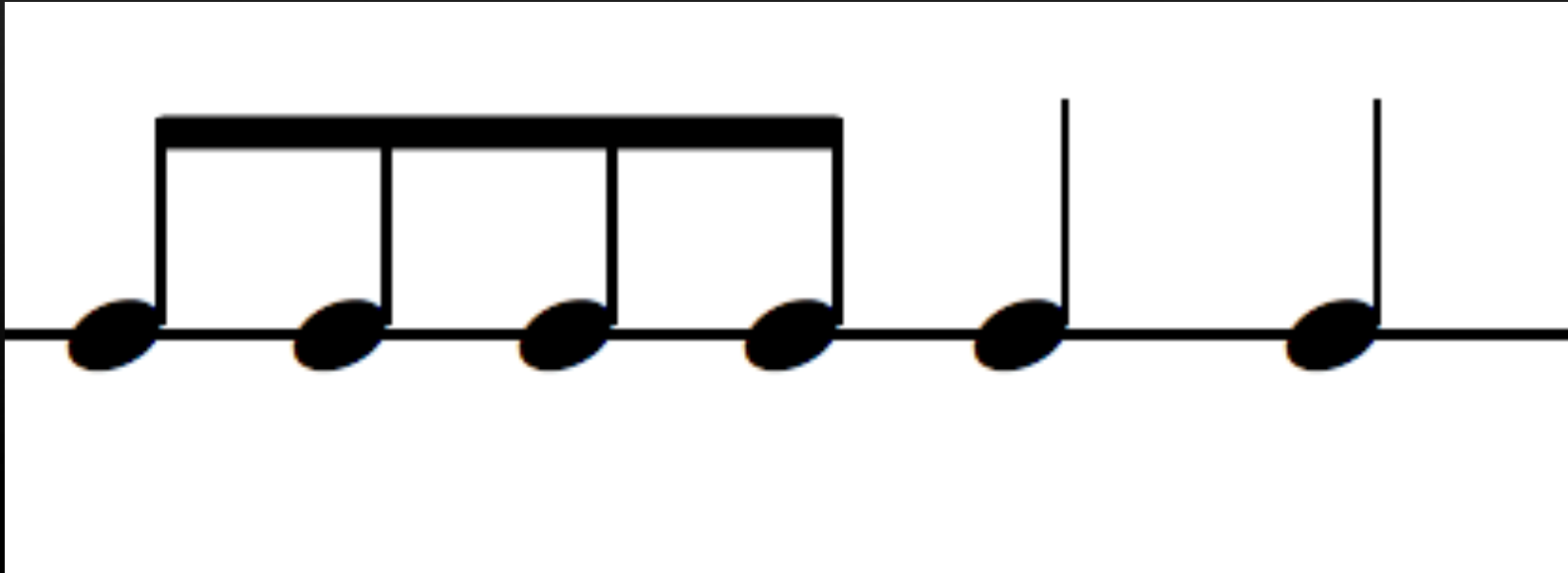


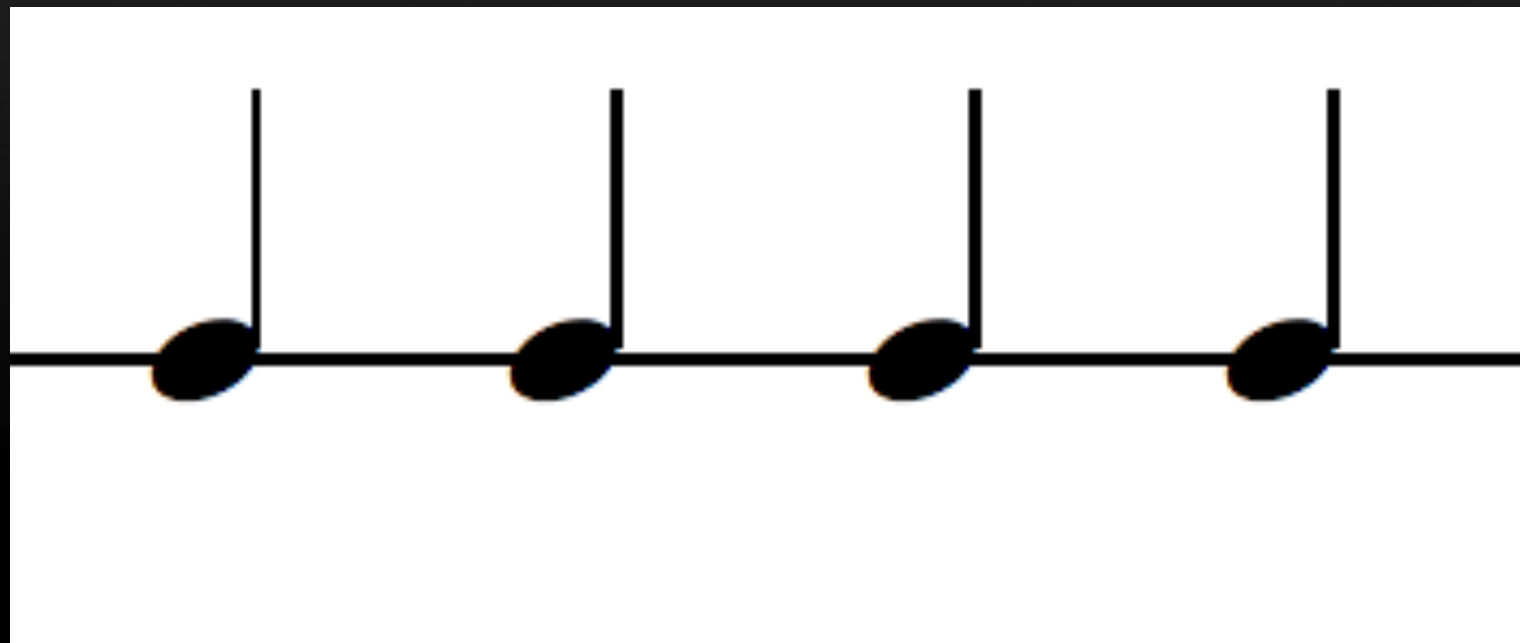


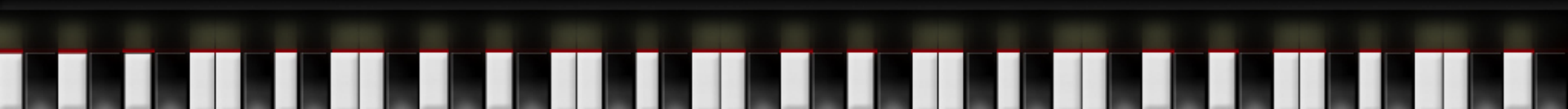
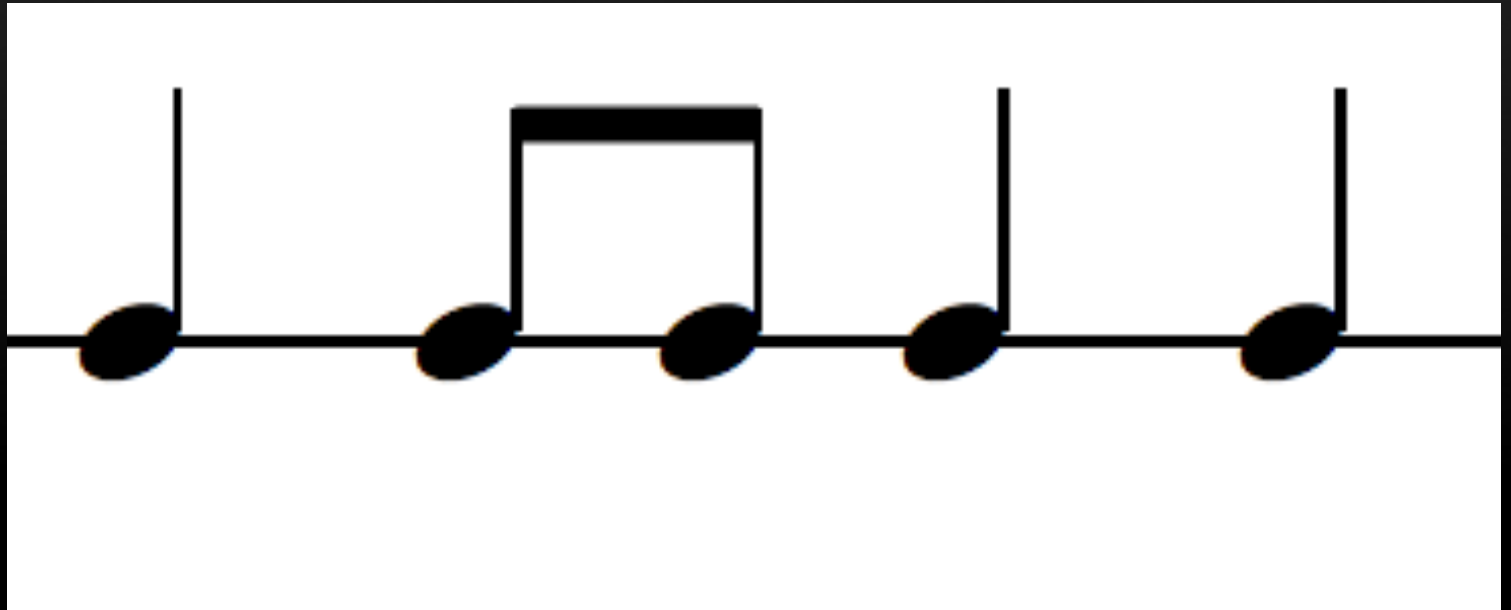


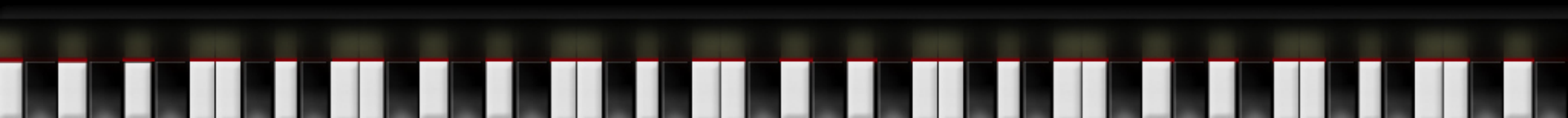
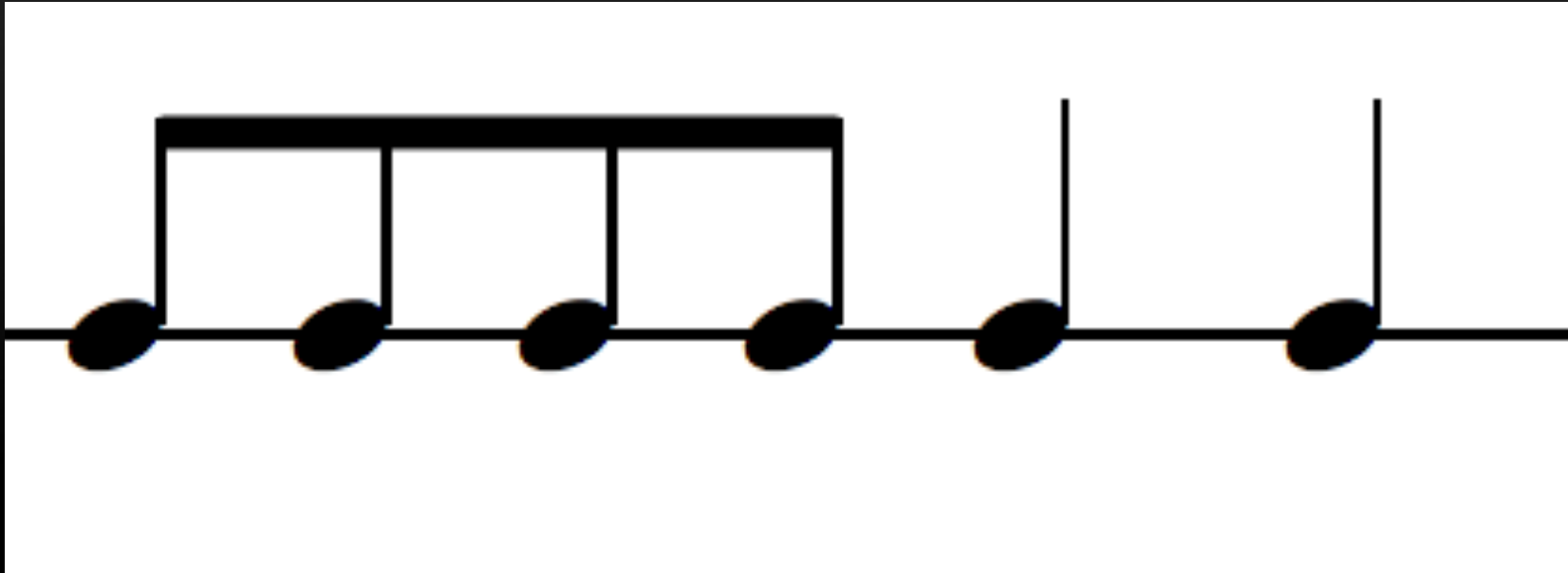


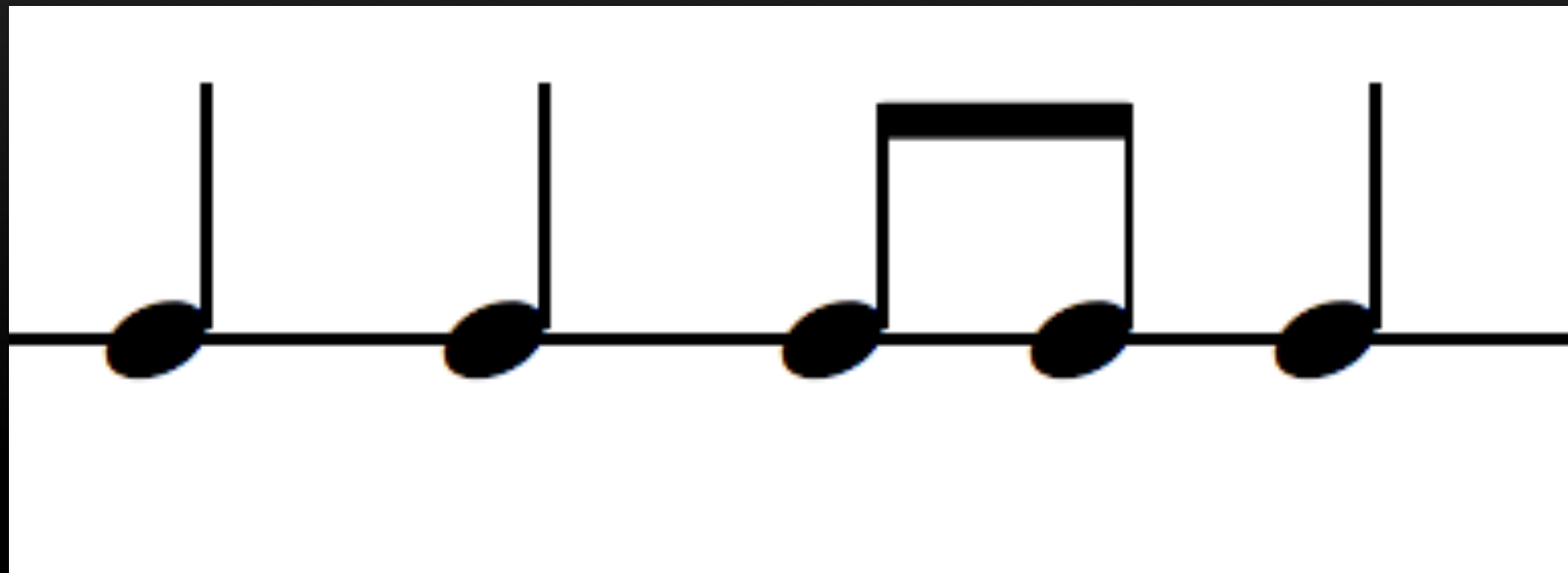


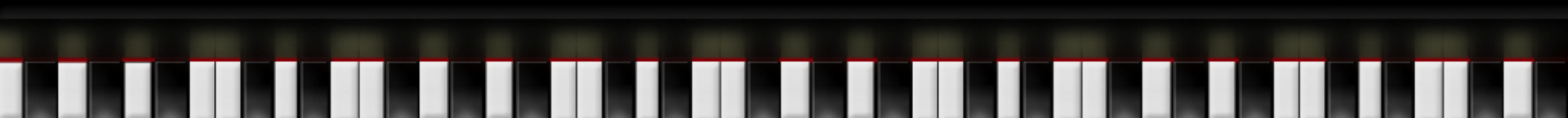
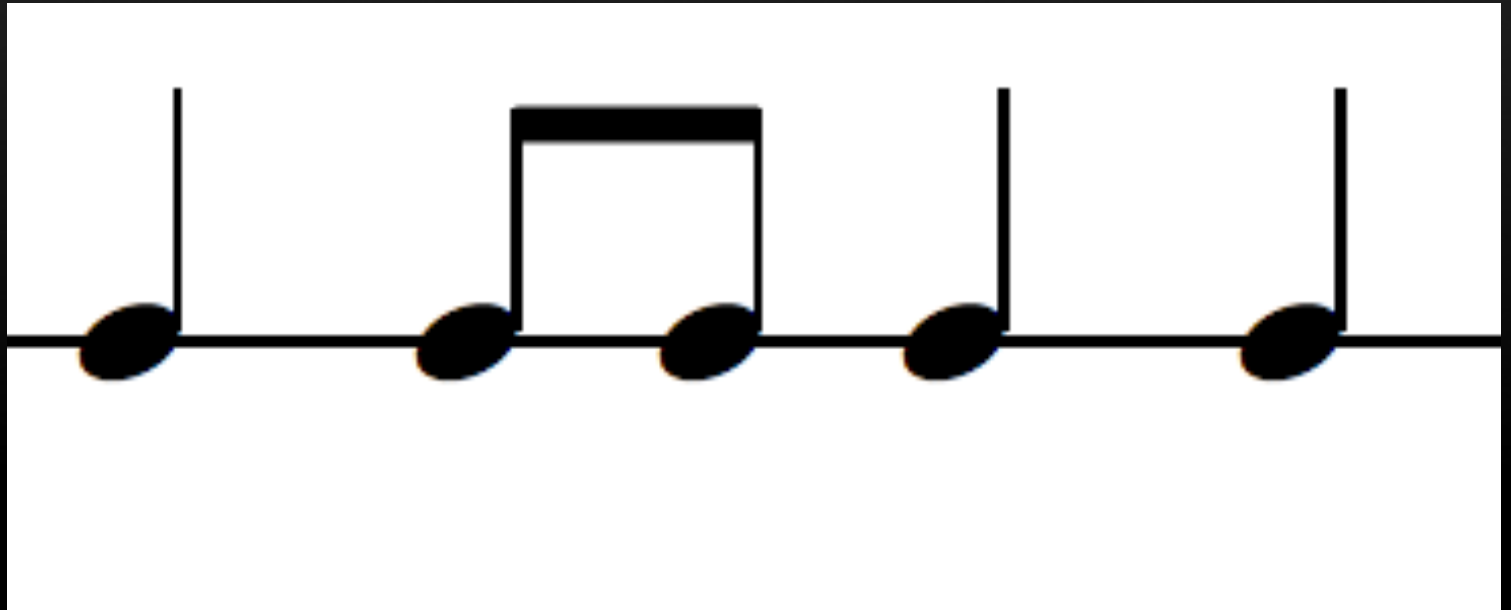




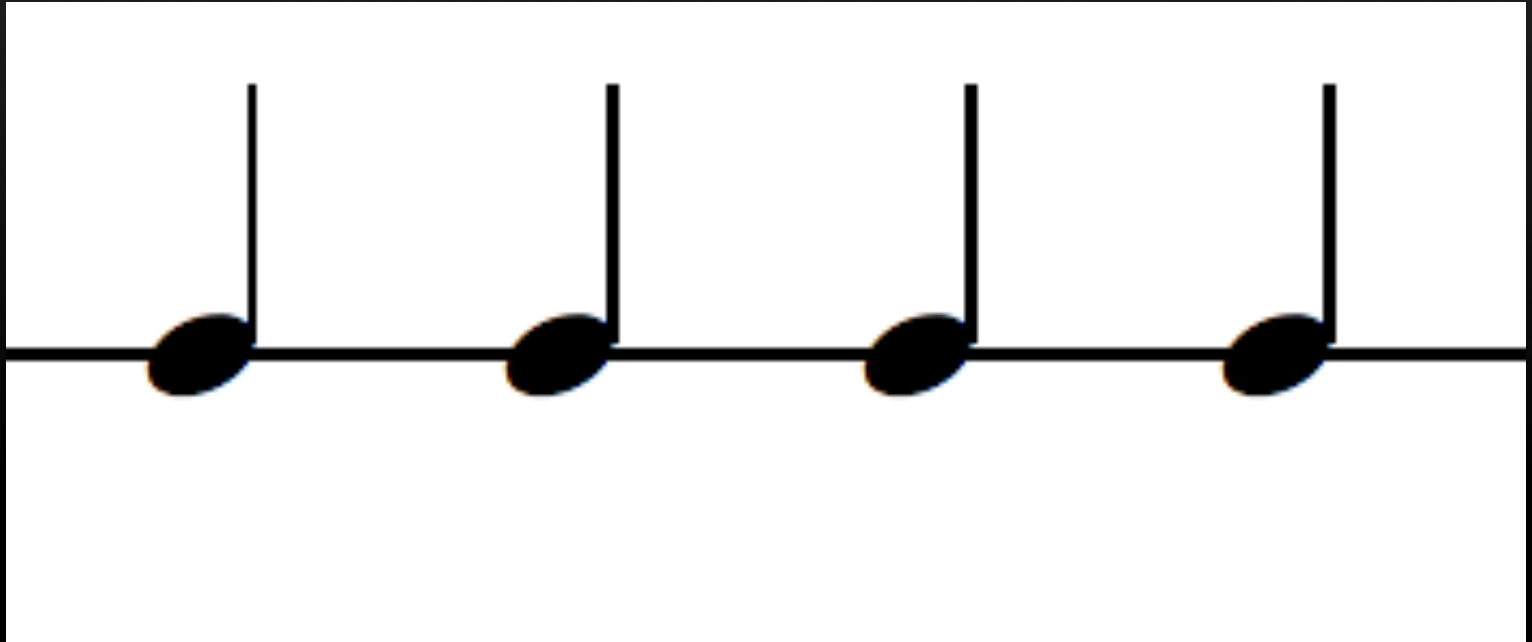




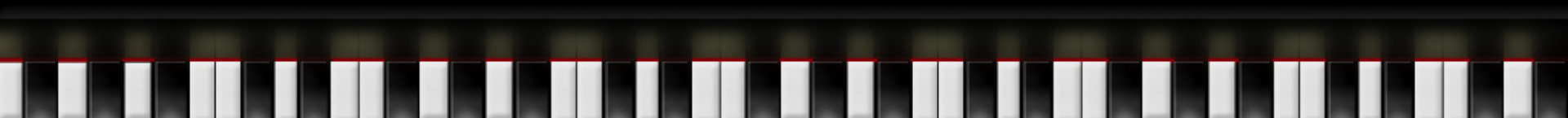
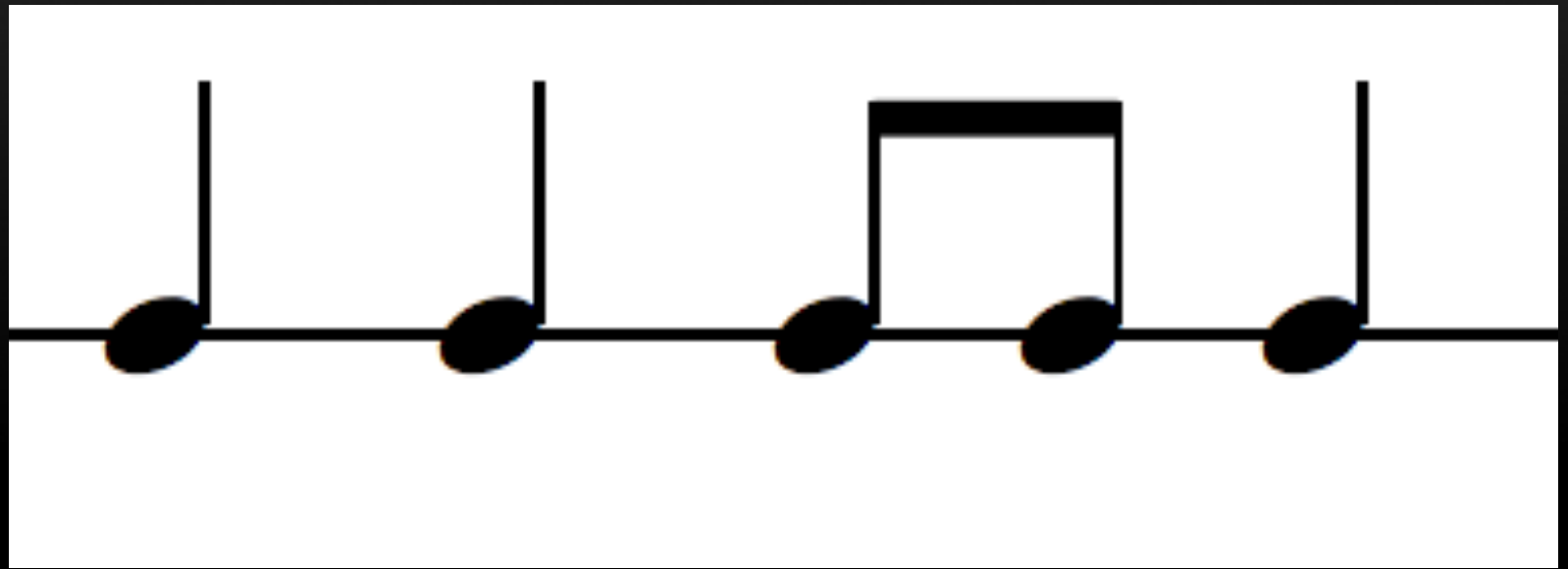


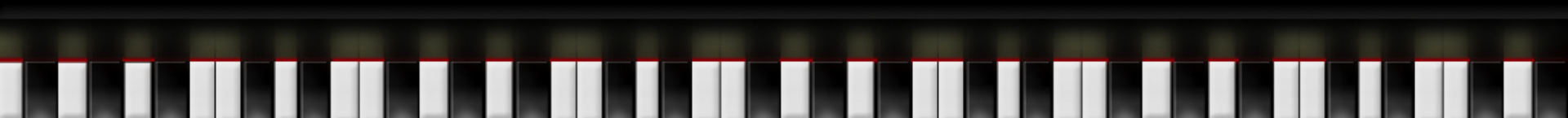
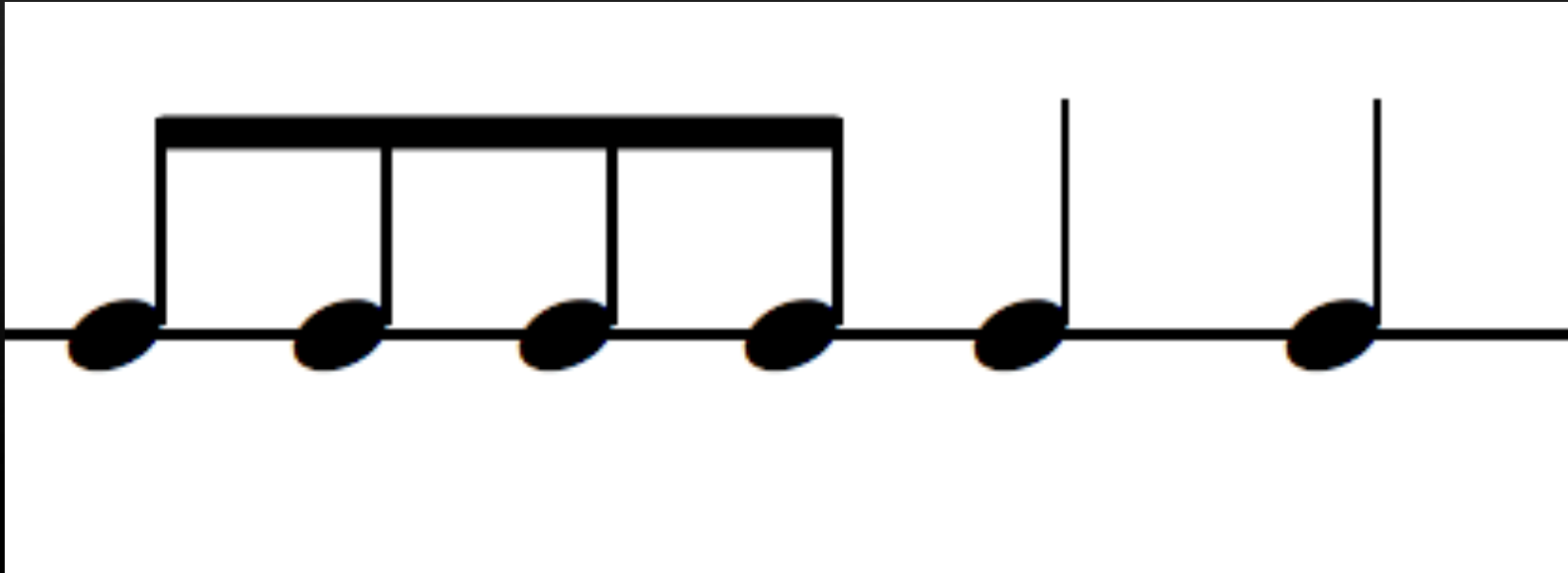


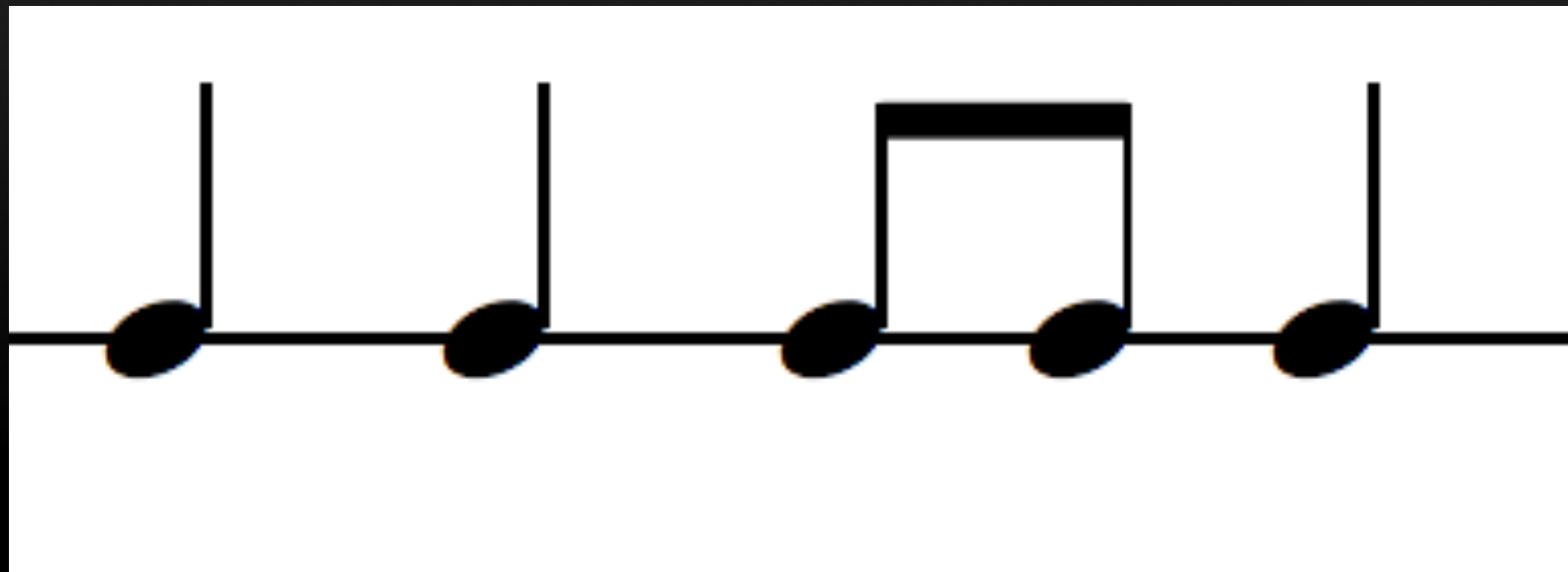
# Your Turn!

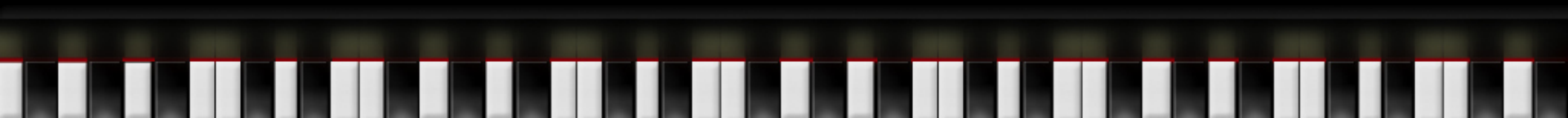
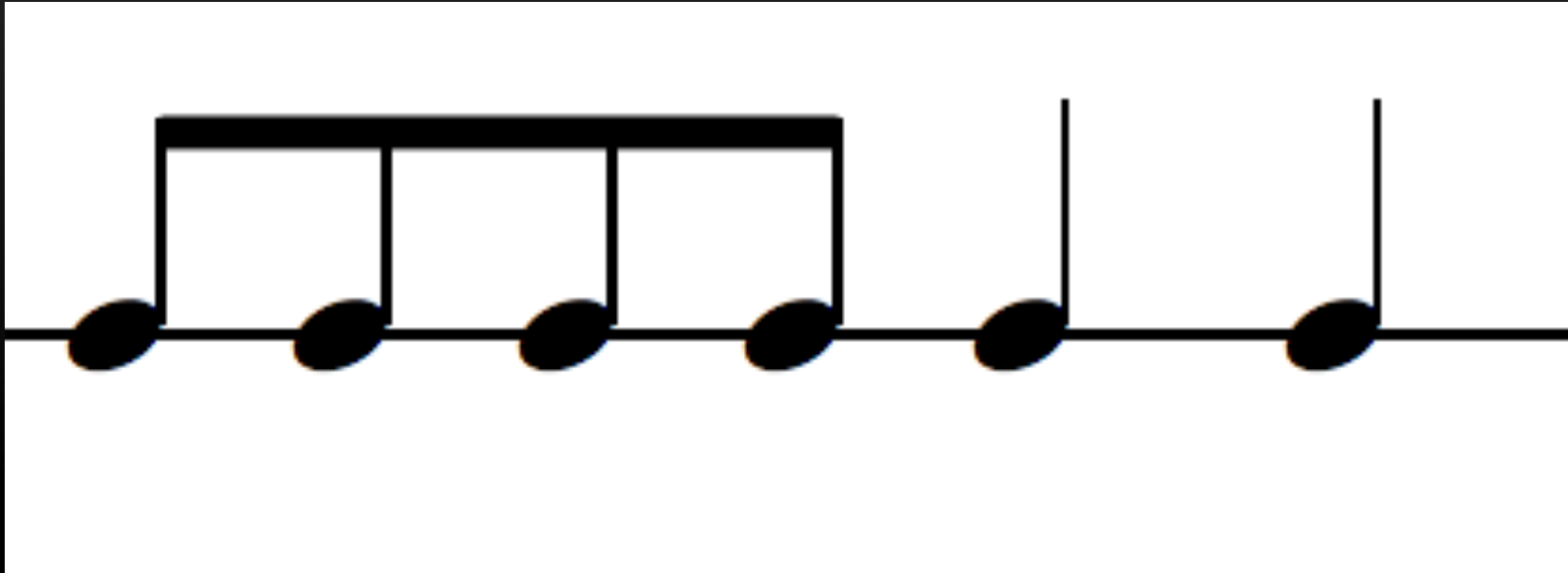


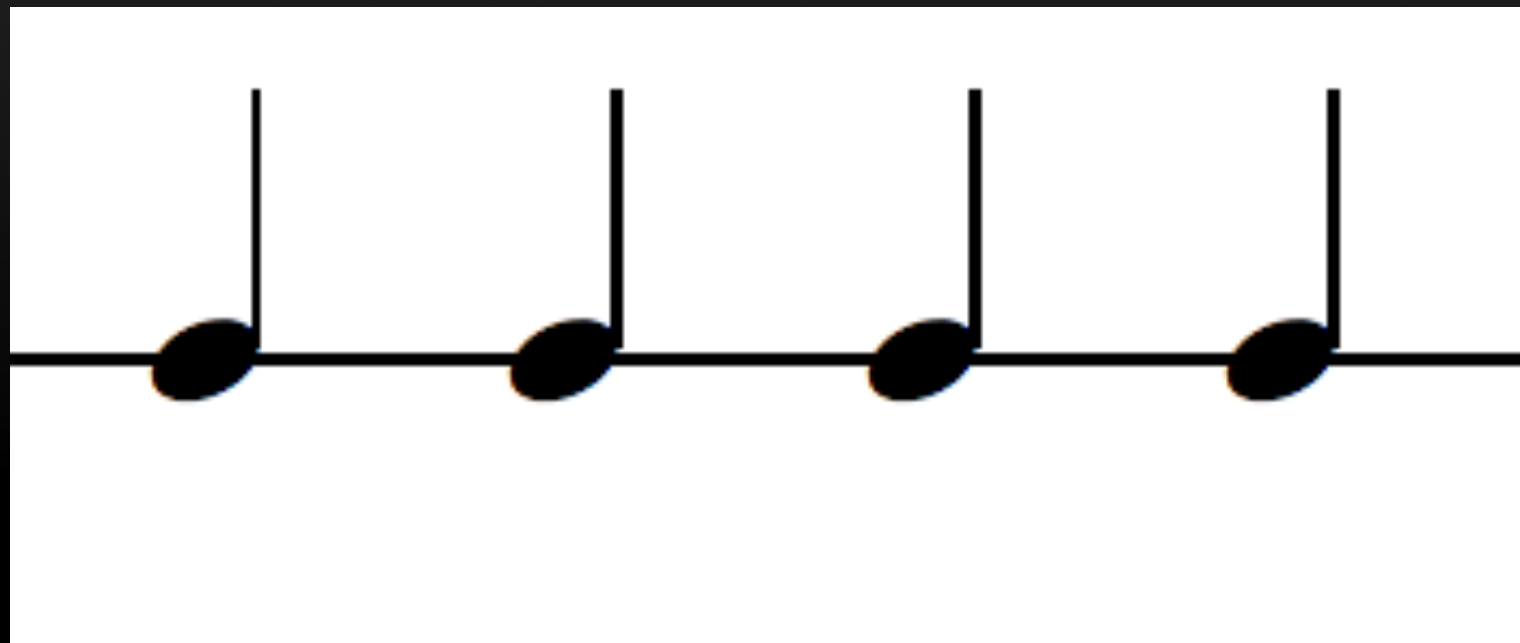


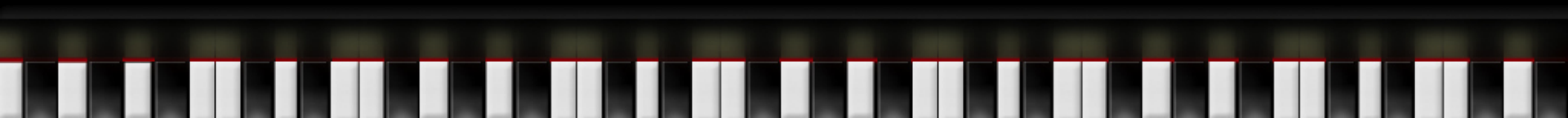
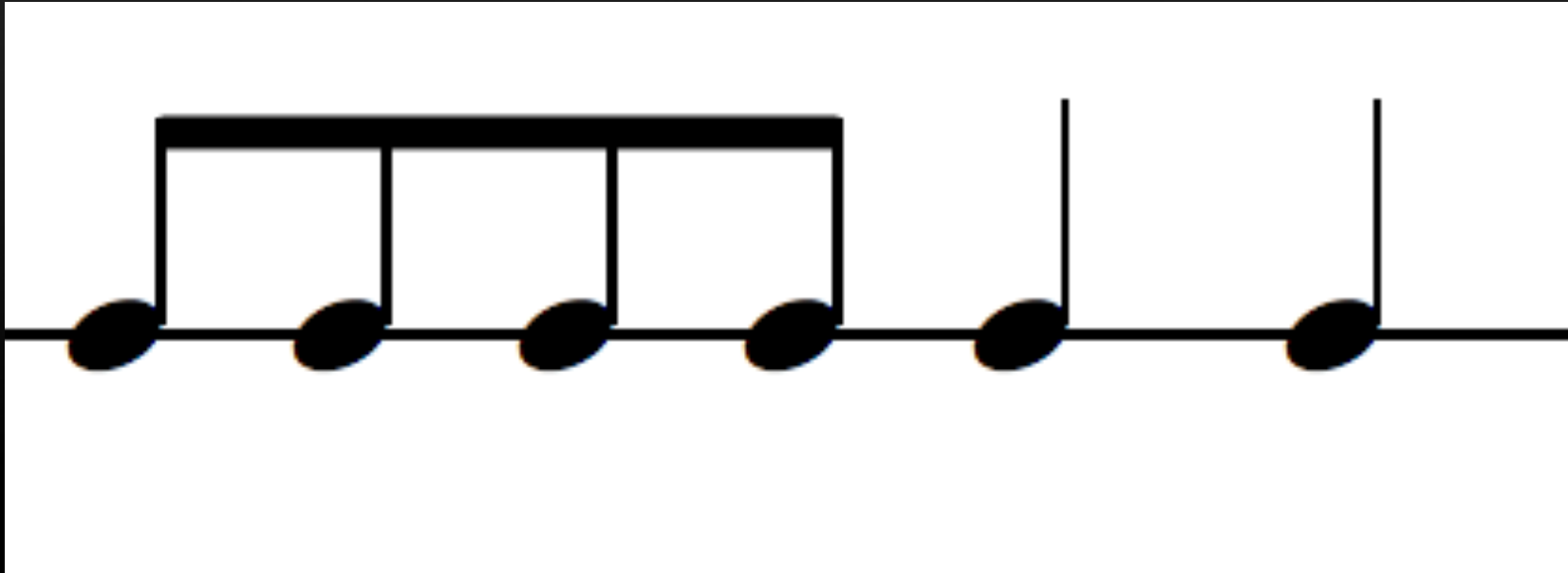


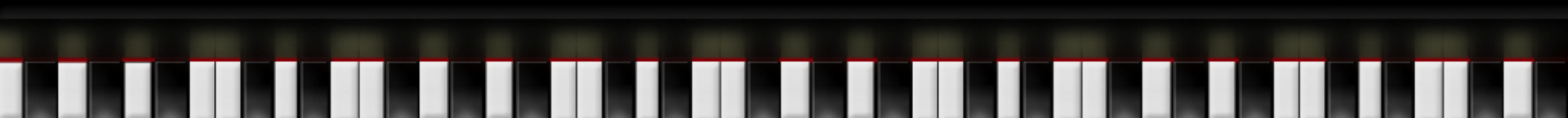
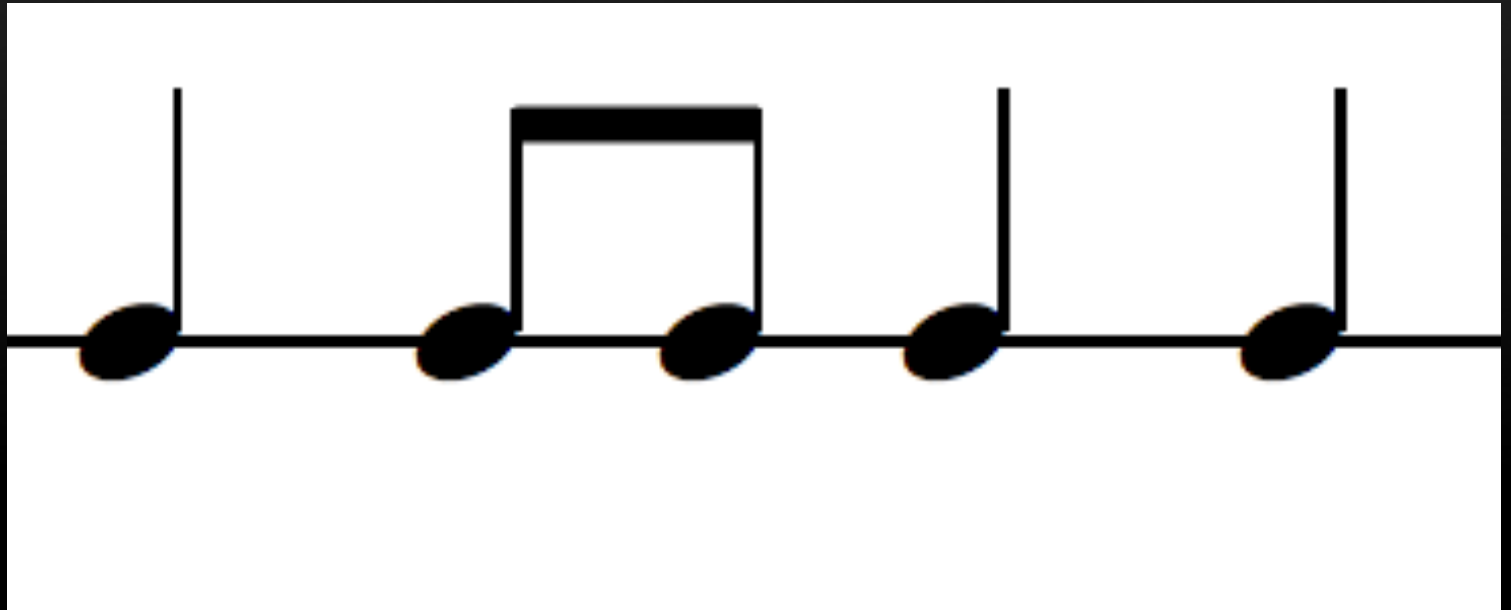


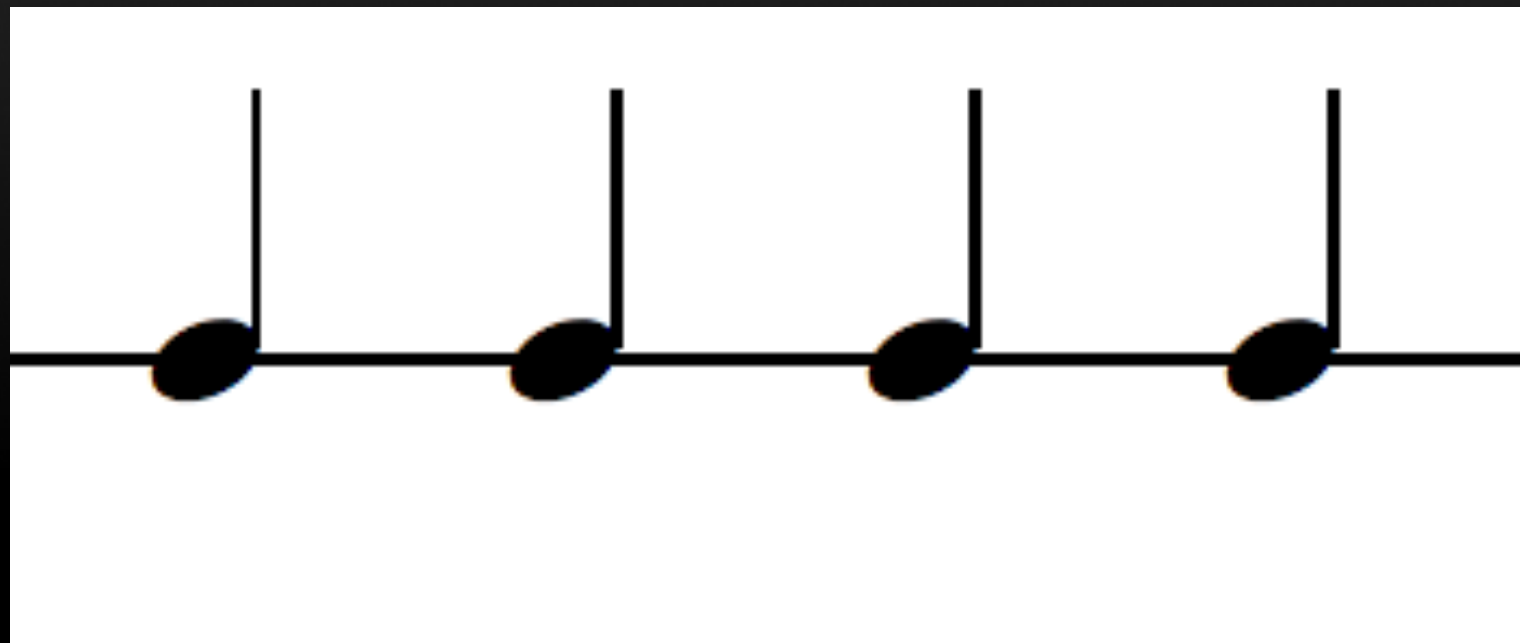




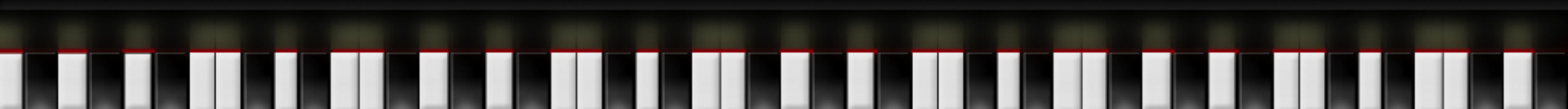
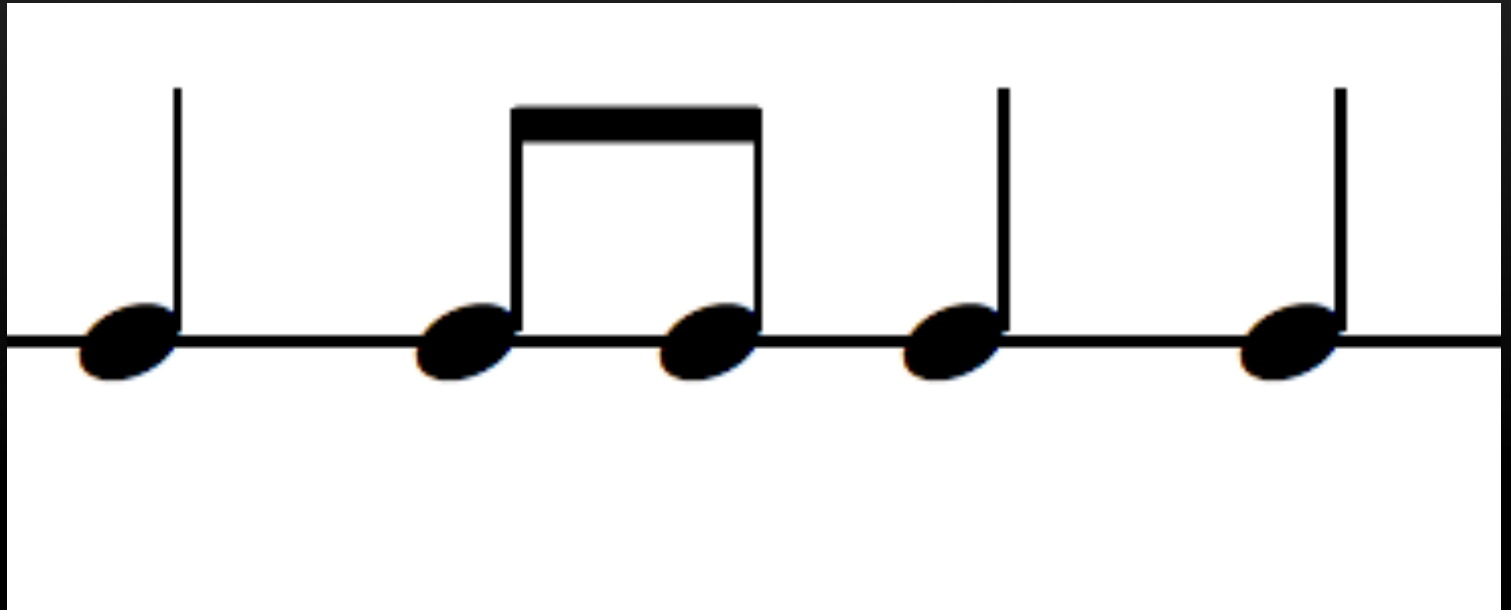












# Questions?

Please type HAND in the chat  
if you have a question.

[www.DLESmusic.com](http://www.DLESmusic.com)

