

# Welcome to DLES!



January 21, 2020

# DLES Highlights

1 Classroom Instruction

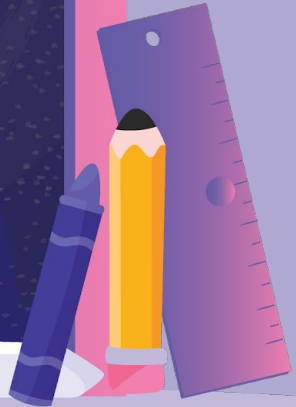
2 DLES Expectations

3 Fine Arts

4 Before and After Care

5 How to Get involved

6 Building Highlights



1

# Classroom Instruction



# Classroom Instruction



## CONSISTENT throughout the County

- All HCPSS schools teach the same standards
- Differentiation is provided based on needs



## Math

- DreamBox K-5
- GT MATH- 4-5



## Intermediate Grades

- Departmentalized



## ELA

- K, 1 & 2 - Being A Reader
- K - 5 - Being A Writer
- Flexible grouping and continuous monitoring to support instructional match



## Caring Schools Community

- Grades K-5
- Daily circles
- Social Emotional Curriculum

# Classroom Placements



## Data

We will communicate with Elkridge to determine the appropriate instructional level for your child. If they were above grade level or GT at Elkridge they will be placed in that level at DLES.



## Flexibility

As we get to know your child and their academics - student placement can always change to meet their current needs



## Articulation

In the Spring there will be a meeting with DLES and Elkridge teachers/admin to discuss all incoming students.

# Gifted and Talented Programs



- Primary Talent Lessons
- Seminars open to all students
- CEUs starting in grade 2
- GT Math for grades 4 and 5

# Title I

- School-wide enhanced programs, services and enrichment

- Support available to all students in our school

- Funding for staff positions and materials

- Family involvement for all families

- Schoolwide Breakfast

# Title I Events

- Homework Help
- Reading Workshop
- Math Workshop
- Caring School Community Workshop
- SIT/FIT Planning



# Regional Early Childhood Programs

- Preschool- three year olds with IEPs.
- Pre-kindergarten- income eligible program & students with IEPs
- MINC Pre-kindergarten- four year olds with IEPs
- MINC Pre-School- three year olds with IEPs
- Learning Together Program (LTP) for 3 and 4 year olds
- Applications for income eligible Pre-K and LTP Program available in office

2

# DLES Expectations



# AT DLES WE ARE:



C – Caring

A – Achieving

R – Ready to Learn

E – Everyday

# Student Recognition and Activities

- Owl Feathers
- Golden Owl Feathers
- Monthly Hoot Clubs
- Buddy Club
- Quarterly Awards
- Class Dojo

3

# Related Arts



# Chorus

- Students in Grade 4 & 5 may elect to participate in chorus.
- Rehearsal schedules vary each year depending on the master schedule.
- Letter goes home inviting students to enroll in the Fall.

# Band and Strings

- Students in Grades 3–5 may elect to participate in strings.
- Students in Grades 4–5 may elect to participate in band.
- Rehearsal schedules vary each year depending on the master schedule.
- Students will be able to identify interest in the fall.
- Articulation with the sending schools will take place prior to the end of the school year.
- We will know if your child is already participating in an instrument.

# Concerts

- Students in chorus, strings and band will have the opportunity to perform in at least two concerts during the school year.
- Concerts will take place in the Winter and Spring.
- Concert dates and locations depend on the number of students performing.
- Concert dates and times for the 2020–2021 school year will be shared in the Fall.



4

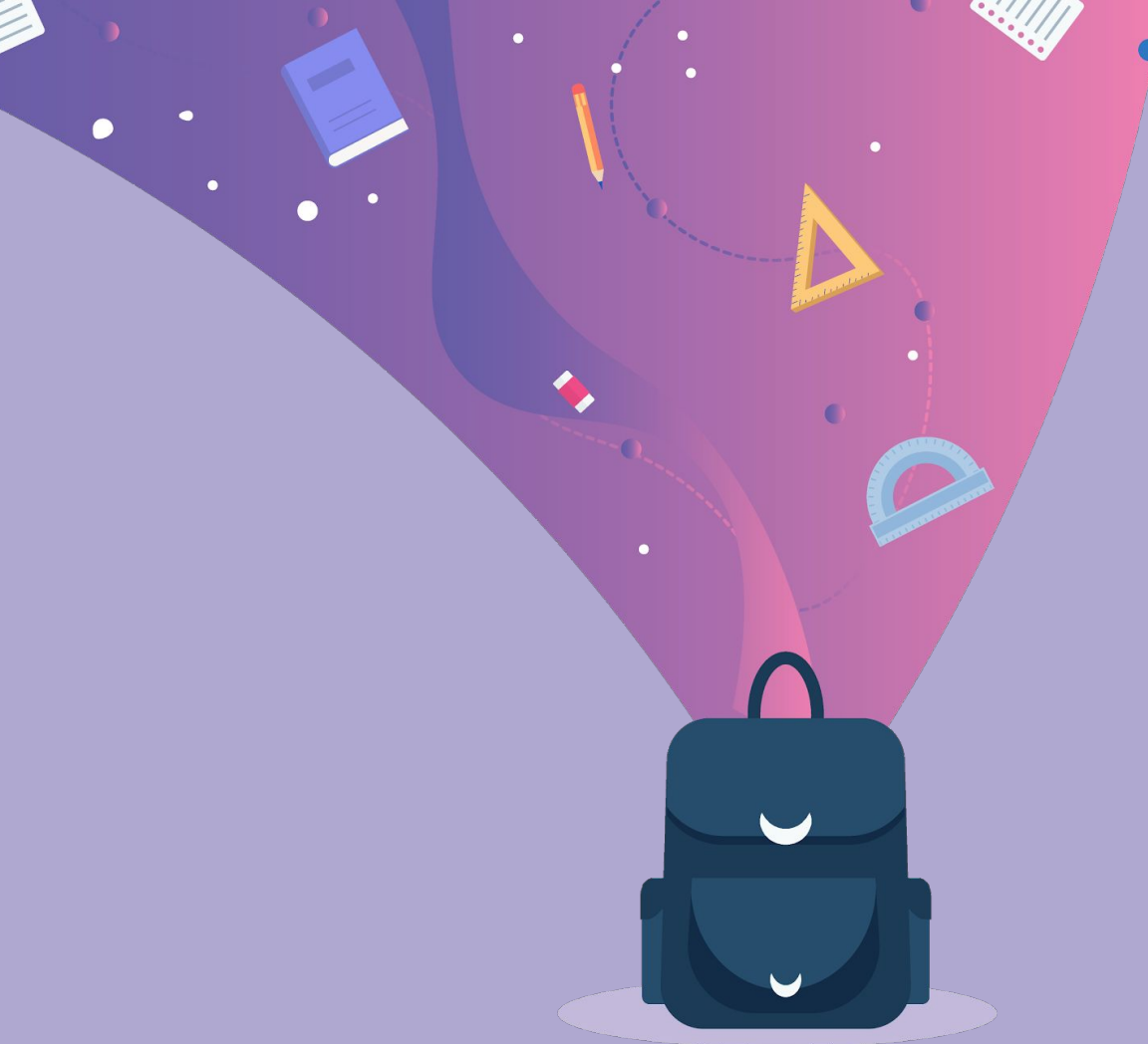
# Before and After Care



# Before and After Care



- Register through Howard County Parks and Rec
  - 410-313-7275
  - [registration@howardcountymd.gov](mailto:registration@howardcountymd.gov)
- PTA and Other After school programs
  - Karate, Bricks for Kids, Kids Art, Cheerleading, Good.News Club.



# 5 How to Get Involved

# Ways to Get Involved

- PTA- Please join!
- Watch Dogs
- Volunteering
- Family Activities
- Family Learning Nights- Title 1 Events for Reading, Math, and Caring School Committee

# Upcoming Spring Events !

- Festiverde! Reduce, Reuse, Recycle:  
Saturday, May 16th
  - 9:00 am- 12:00 pm
- Dine and Dance: June 1st from
  - 5:00 pm-7:00 pm

6

# Building Highlights



# Telemedicine

Purpose: To help keep kids in school, healthy and ready to learn. Services Include treatment for illnesses such as:

Sore throat

Ear infections

Asthma

Rashes

Conjunctivitis

Colds & upper respiratory symptoms

Our staff will work with you & your child's healthcare provider to coordinate care so your child receives the care he or she needs while in school.

Video link:

<https://www.youtube.com/watch?v=U29noOa1MUA>

# Contacts

- Title I Family Involvement Contact-
  - Mrs. Katie Martinelli
- Hispanic Liaison Contact-
  - Mrs. Elcy Seminara
- Chin Liaison Contact-
  - Ms. BiBi Tial



# Stay Connected

[www.dles.hcpss.org](http://www.dles.hcpss.org)

[twitter.com/hcpss\\_dles](https://twitter.com/hcpss_dles)

[www.facebook.com/dles.pta/](https://www.facebook.com/dles.pta/)

School Messenger- Please keep your information updated

It is tour time!